

Direct Lighting

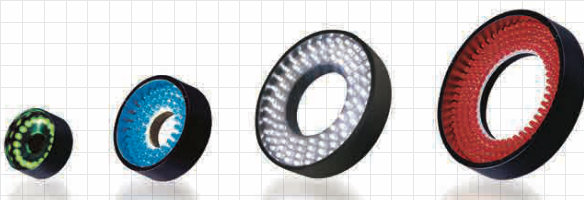
Flat Direct Ring Light

IDR-F series

24 V DC Models Available



LEDs mounted on flat surface provide even, wide-area illumination



Model	Light Color	Power Consumption (W)	SAG(°)	Drawing
IDR-F32/10R	R	0.8	6D	1
IDR-F32/10W	DW	1.5	FF	
IDR-F43/15R	R	1.5	6E	2
IDR-F43/15W	DW	2.9	FF	
IDR-F50/15R	R	2.2	6F	3
IDR-F50/15W	DW	4.4	FF	
IDR-F60/32R	R	2.4	6F	4
IDR-F60/32W	DW	4.8	FF	
IDR-F70/37R	R	4.4	70	5
IDR-F70/37W	DW	7.5	FF	
IDR-F90/50R	R	8.2	73	6
IDR-F90/50W	DW	8.2	FF	
IDR-F100/50R	R	8.7	73	7
IDR-F100/50W	DW	8.7	FF	
IDR-F110/60R	R	9.6	74	8
IDR-F110/60W	DW	12.8	FF	

□ represents DW (White), B (Blue), or G (Green).

*Optional diffusing plate/polarizing plate can be mounted.

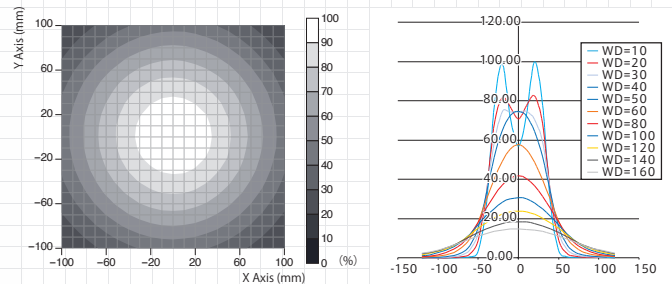
IDR-F32/10 requires adhesive securing or a dedicated adapter.

*Input voltage is 12 V DC, but 24 V DC models are also available. *See page 43-44 for 24 V DC models.

*Sizes other than those above are also available.

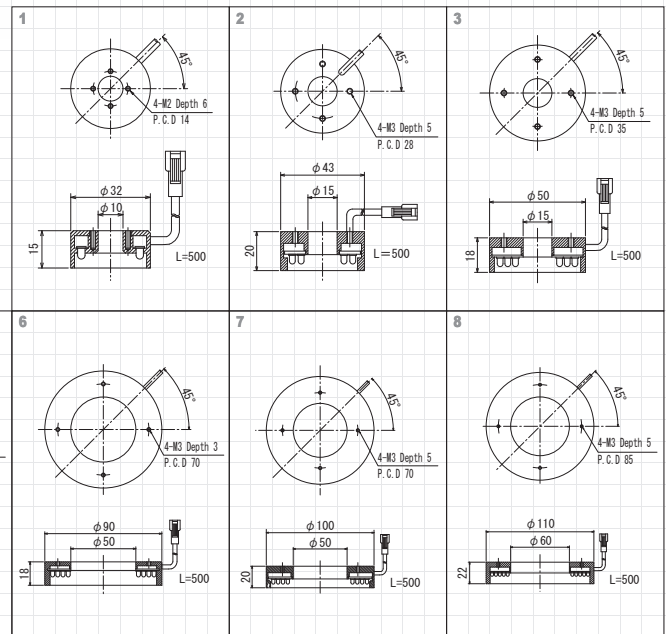
*The SAG value indicates the maximum voltage setting for SAG power supplies. For details, see page 53.

Luminance Distribution Chart (Reference Values)



Superbly uniform lighting is ensured even at a long working distance.
Measurement model: IDR-F110/60DW
WD : 200mm

A wide, uniform lighting area is ensured by mounting the LED in parallel with the work surface.
Measurement model: IDR-F70/37DW



Effect A wide area can be photographed using flat illumination from above.



IDR-90/50DW



IDR-F90/50DW



IDR-90/50R



IDR-F90/50R

LIGHTING STRUCTURE

