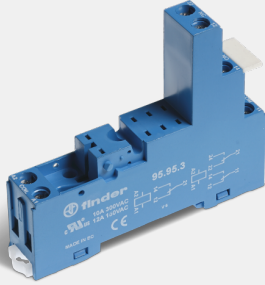


9595

Sockets and accessories for 40, 41 and 86 series relays



Technical description:

Screw terminal (Box clamp) socket panel or 35 mm rail (EN 60715) mount

This image is for illustrative purposes only and therefore may not represent the exact product code. Colours may vary.

[BROWSE PRODUCT PAGE](#)

Technical Features:

Ambient temperature range:

-40...70 °C

Commercial Description:

Screw terminal (Box clamp) socket panel or 35 mm rail mount (EN 60715) for 40 Series relays, Type 40.51, 40.52, 40.61, 40.62. Coil terminals on opposing side to the contact terminals.

Dimensions:

15.5x78.6x61.3 mm

Certifications and quality approvals (according to type):



The information, technical details, data and features contained in this document are subject to change or modification at any time.
It is for information purposes only and does not form
the basis of a contract.

Need more information?

[Contact our sales](#) [Find a dealer](#)